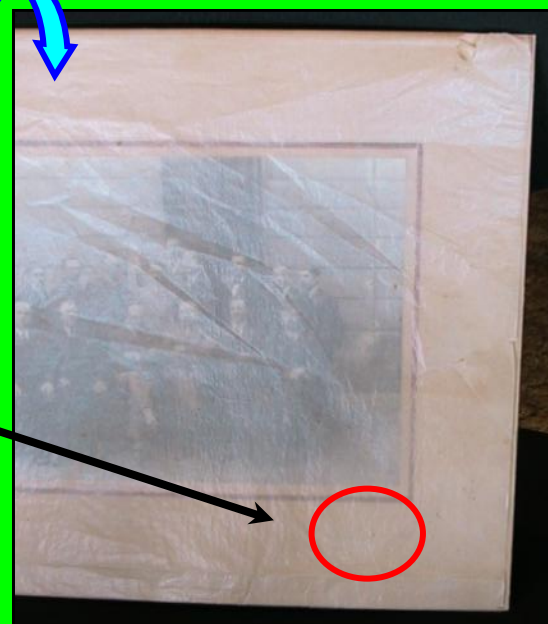
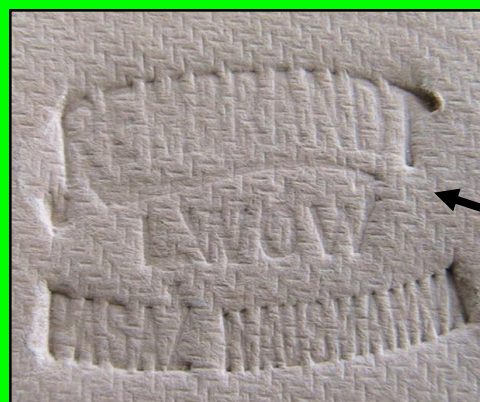




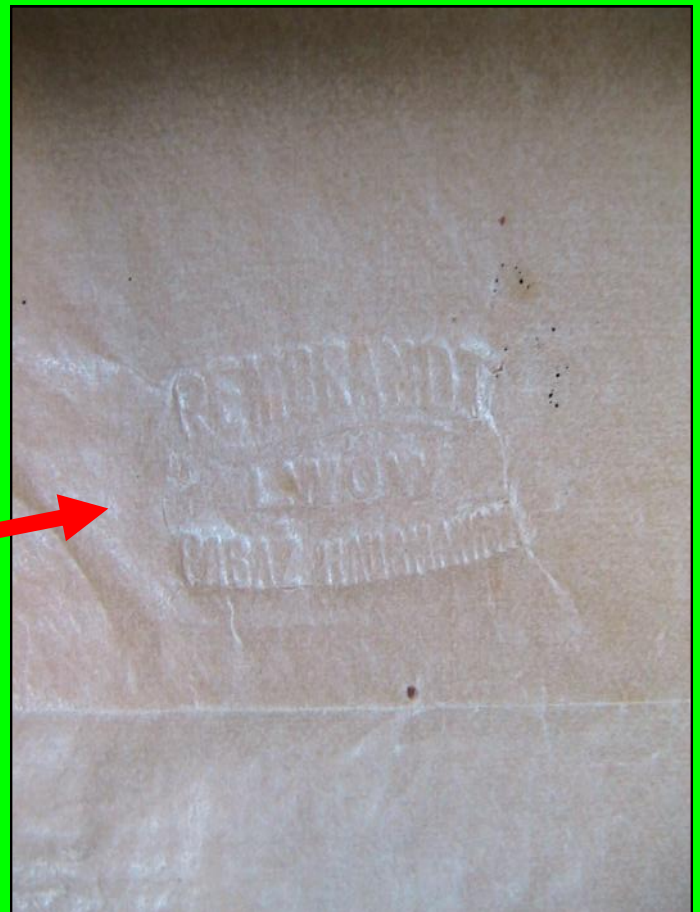
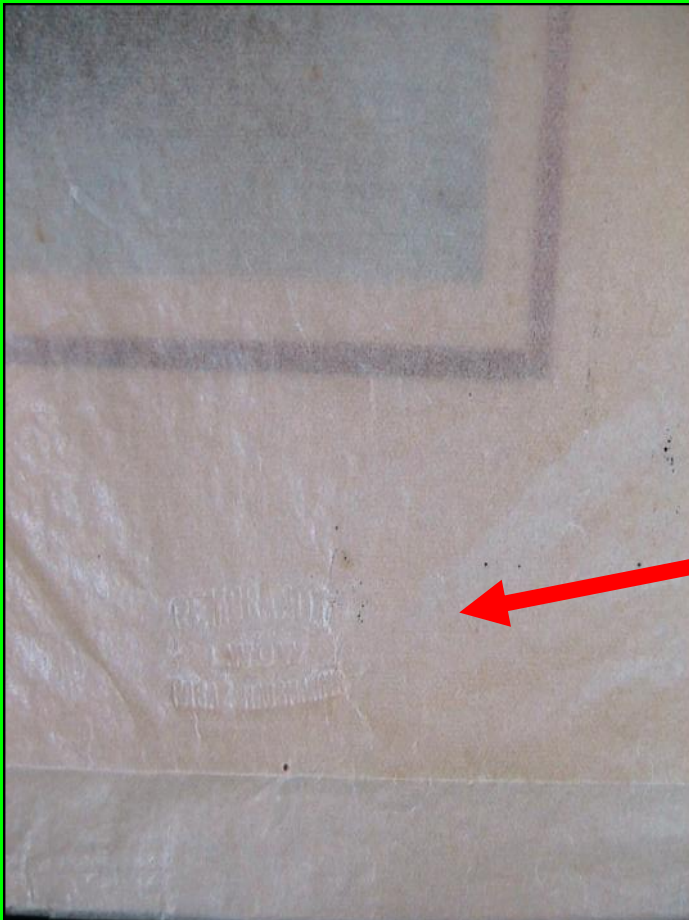
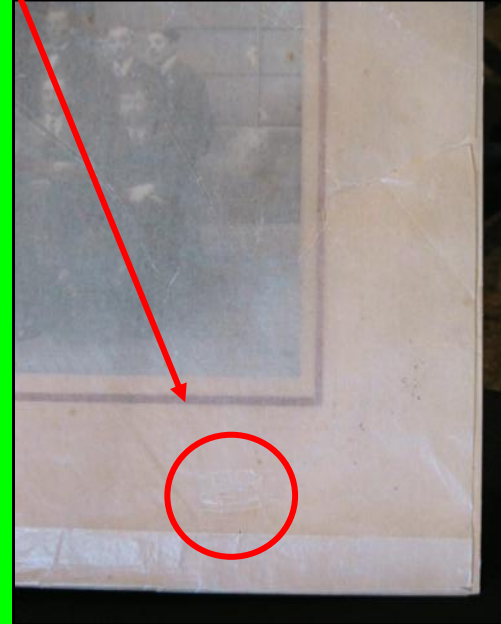
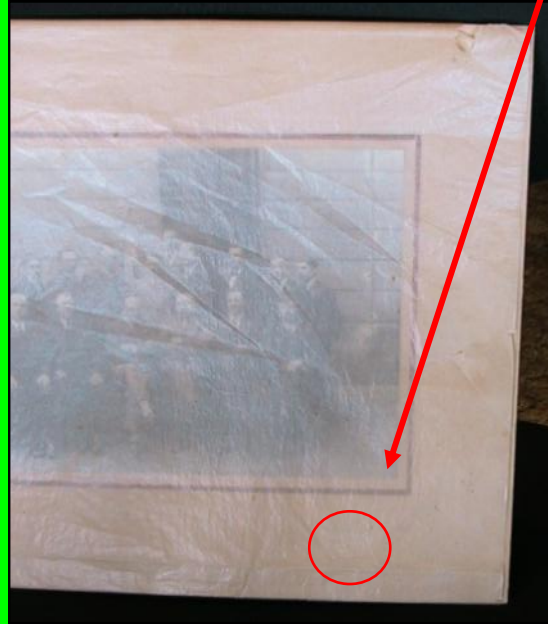
Victor's Zeiss-Ikon-Ikonta photo camera. Doubtless the one used to photograph Mussolini's fascist group. In very good condition.



Rembrandt mounted this photo with a glassine sheet protector (attached on top)



Rembrandt's embossed logo is pressed directly through the glassine sheet protector and into the mounting board



Rembrandt's embossed logo is pressed directly through the glassine sheet protector and into the mounting board



**Embossed Logo of
the Photo Atelier who
developed and mounted the picture.**

